

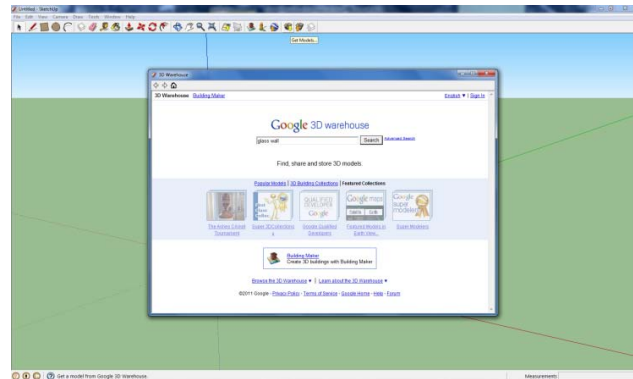
My Museum Part I

Grades 9-12

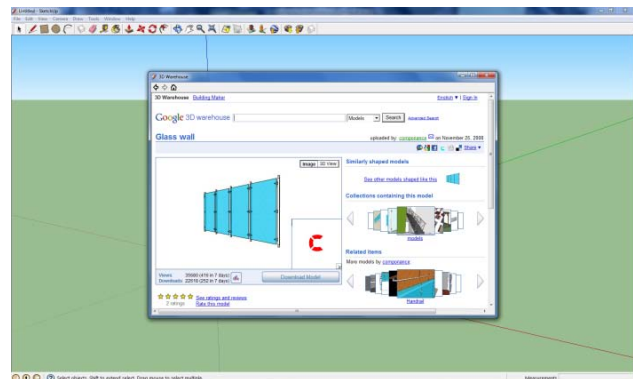
Objective: To Create a virtual Museum.

Build your own museum collection using Google SketchUp!

1. Download Google SketchUp (<http://sketchup.google.com/>) and open a new file.

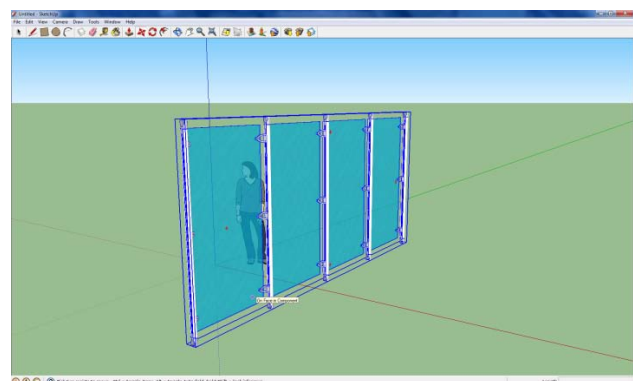


2. Click on “get models icon” (a brown box with a yellow down arrow). Under google 3D warehouse search “glass wall.”



3. Download glass wall directly into your open file.

4. Place the glass wall where you would like on the screen.



5. For the next step, you can either use images you have already selected or use images from the google database.

For images from the google database: Under Window choose “components.” Search “flower” and there are many images that you can choose from. Once you select your flower, then place it on your glass screen.

6. Repeat this for your other two favorite items.

7. Alternatively, if you have you have photographs or cut –outs scan them onto the computer or use a CD. Open the CD. Then, you can use File > Import which will open a File Open dialog allowing you to navigate to the file you want. Alternately, you can simply drag and drop from the File Explorer (Microsoft Windows) or Finder (Mac OS X) directly into your drawing area. Place your photos where you would like them on the glass screen. Place your items where you would like them on the glass screen.

8. Under Tools, select Text. Place cursor on glass screen and then click on each section of the wall to insert a text box. Write in one paragraph about why you chose the item.

9. At this point, you have your images and your text descriptions in your museum layout. You can add other components such as furniture, people, etc by clicking under Window > components. Search for your items by name. Think about if you would like to have a reception, you can add food, a table etc. Have fun!

10. Remember to save your file!

